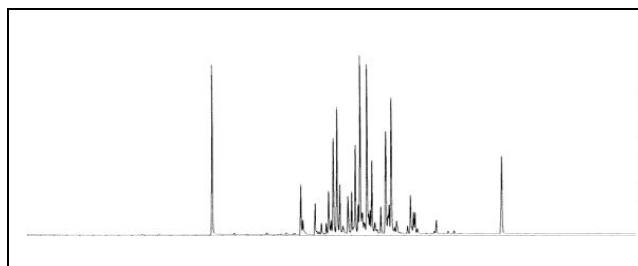


Guidelines for Analysis of PCB's (Polychlorinated Biphenyls) in Building Materials

Fremont Analytical, Inc.
Specializes in Next Day Turn-around
for PCB's in Building Materials with ECD
and GC-MS Confirmation.



Chromatographic image of PCB detection

Methods and Method Capabilities

- **EPA Method 8082 (ECD)**
Used as a cost effective way of analyzing building materials for PCB contamination. This method provides low level reporting limits with a rapid confirmation of samples.

- **EPA Method 8270 - SIM (GC/MS) - Confirmation of positive PCB detections.**
Items such as fire retardants and other building materials can create false positives. EPA Method 8270 can confirm positive PCB detections by EPA Method 8082.

- **EPA Method 8082 with follow-up Confirmation by EPA Method 8270 - SIM**
To keep your projects on schedule, Fremont Analytical can automatically confirm all positive PCB detections with a follow-up GC-MS SIM analysis. Contact the lab for details.

For further information, please contact Fremont Analytical:

Tel: 206.352.3790
Email: info@fremontanalytical.com
Website: www.fremontanalytical.com

Fremont Analytical Inc. (FAI) is a full service environmental laboratory located in the Fremont neighborhood in Seattle, WA. Fremont Analytical offers a full range of analytical services including organic, inorganic and general chemistry analyses for soil, water and air.

Our services include Volatile Organics, Inorganics and Trace Metal Analysis, Specialty Organics (PCBs, Pesticides, Herbicide and Phenols), Stormwater Testing, Drinking Water testing and Air (indoor/outdoor) analysis.